



C. WOERMANN
(NIGERIA) LIMITED

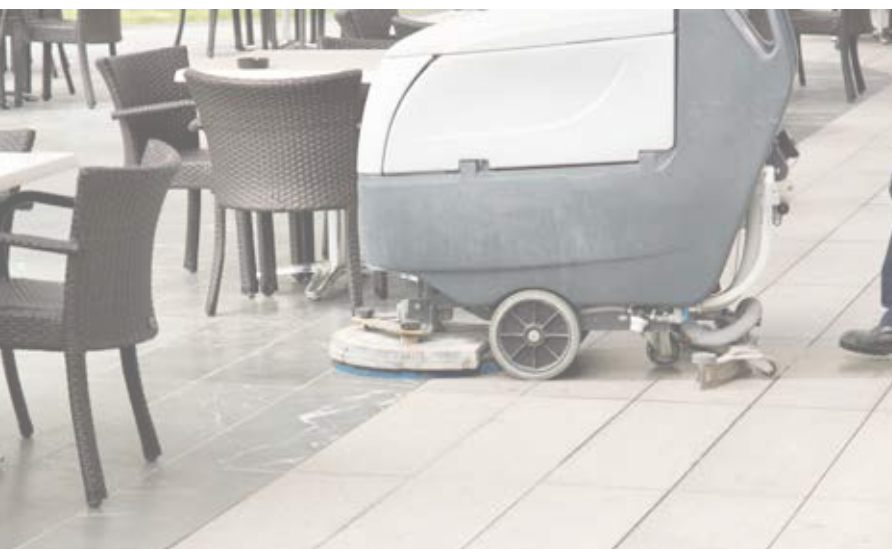
TECHNICAL SUPPLIES AND SERVICES

Cleaning Equipment

Vacuum Cleaners, Single Disc Machines,
Floor Scrubber Driers, High Pressure Cleaners,
Detergents

LAVOR PRO

atas
SPECIALITY





CLEANING EQUIPMENT & CONSUMABLES

We proudly present our new line of cleaning equipment and consumables for professional cleaning

As from the beginning of 2016 we have added a new product line to our portfolio: cleaning equipment by Lavor and detergents by Atas.

We are happy to inform you about our selection of Lavor cleaning equipment which is directly available from us as well as from the selected distribution partner named on page 16 of this catalogue.



Hamburg
HEAD OFFICE



C.WOERMANN (NIGERIA) LIMITED | 6, Badejo Kalesanwo Street, Matori Industrial Estate, Lagos, Nigeria
Tel. +234 01 7 73 64 98 | Tel. +234 01 7 73 09 04 | info@woermann-nigeria.com | www.woermann-nigeria.com



Lagos



Vacuum Cleaners

Pages 4–5



Single Disc Machines

Pages 6–7



Floor Scrubber Driers

Pages 8–11



Hot Water High-Pressure Cleaners

Pages 12–13



Detergents

Page 14

Vacuum Cleaners



Dry Vacuum Cleaner Silent

- Silenced single stage motor (high efficiency)
- Cloth filter
- Integrated accessory holder
- Shock and overturn proof design
- Paper collector filter
- Rotating on/off switch
- 12 l plastic tank (PP) (9 l dust)
- 800 W
- 44 l/s air suction
- 390 x 390 x 420 mm
- 6.8 kg
- 7.5 m power cable
- 2 m hose

Standard equipment



LAV 8.246.0001

Optional accessories

- Set of 10 paper collector filters LAV 5.212.0023

Dry Vacuum Cleaner Whisper V8

- Ultra silent single stage motor (high efficiency)
- Paper and cartridge filter
- Full collector filter indicator
- Air exhaust fan filter
- Integrated accessory holder
- Quick power cable (15 m) replacing system
- Shock and overturn proof design
- Voltage 230-240 V, 50 Hz
- Tank total volume 15 l (10 l dust)
- 1100 W
- 470 x 340 x 360 mm
- 5.5 kg
- 2.5 m hose

Standard equipment



LAV 8.214.0501

Optional accessories

- Set of 10 paper collector filters LAV 5.212.0023



Wet & Dry Vacuum Cleaner VAC 20 S



- Voltage 230 V, 50 Hz
- Tank capacity 20 l
- Air suction max. 30 l/s
- 1000 W (max. 1200 W)
- 4 m power cable
- 390 x 370 x 430 mm
- 5 kg
- 1.5 m hose

LAV 8.243.0002

Standard equipment



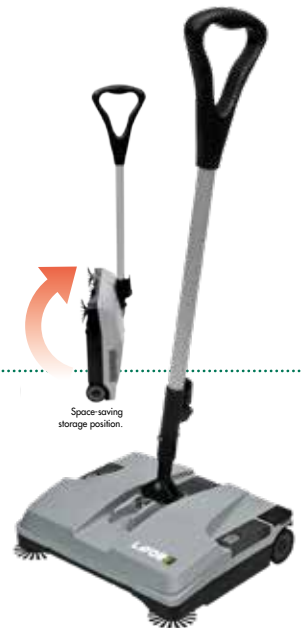
Optional accessories

- Set of 5 paper collector filters LAV 5.212.0140

Cordless Sweeper BSW 375 ET

- Max working capacity 1000 m²/h
- Main brush + side brush width 375 mm
- Collector tank capacity 2 l
- 25 W
- 300 x 360 x 700 mm
- 2.8 kg
- Space saving storage position

LAV 0.064.0001



Standard equipment



Wet & Dry Vacuum Cleaner Trenta X



- Voltage 230 V, 50 Hz
- Tank capacity 30 l
- Air suction max. 70 l/s
- 1400 W (max. 1600 W)
- 370 x 370 x 710 mm
- 9.3 kg
- 4 m power cable
- 2 m hose

LAV 8.228.0005

Standard equipment



Optional accessories

- Set of 5 paper collector filters
LAV 5.212.0049



Wet & Dry Vacuum Cleaner Windy 120 IF



- Voltage 220/240 V, 50/60 Hz
- Air suction 65 l/s
- Tank total volume 20 l (14 l dust, 16 l liquid)
- 1200 W (max. 1400 W)
- 350 x 350 x 660 mm
- 8 kg
- 7.5 m power cable
- 2.5 m hose

LAV 8.249.0001

Standard equipment



Optional accessories

- Set of 10 paper collector filters
LAV 5.212.0022



Wet & Dry Vacuum Cleaner Windy 265 IF



Standard equipment



- Voltage 220/240V, 50/60 Hz
- Air suction 130 l/s
- Tank total volume 65 l (30 l dust, 40 l liquid)
- 2 motors
- 2000 W (max 2400 W)
- 440 x 460 x 960 mm
- 14.5 kg
- 7.5 m power cable
- 2.5 m hose

LAV 8.239.0001

Optional accessories

- Set of 10 paper collector filters
LAV 5.212.0022



Single Disc Machines



Low Speed Scrubbers

SDM-R 45G 16-160 and 16-180

- Professional, sturdy, manageable, practical and simple to use
- Ergonomic handle with integrated safety controls
- Strong joint handle
- Powerful and noiseless motor
- Adapted in order to satisfy all the cleaning requirements, restoration and treatment of marble and natural stones, woods and hardwood flooring, carpeting, dewaxing, hard scrubbing
- Working width 430 mm (17")
- Brush speed 165 rpm
- 542 x 425 x 1200 mm
- 1600 or 1800 W
- 41 or 52 kg

Standard equipment

- Black pad, set of 5 pads

LAV 0.055.0303 – **SDM-R 45 G 16-160, 1600 W, 41 kg**

LAV 0.055.0304 – **SDM-R 45 G 16-180, 1800 W, 52 kg**

Optional accessories

- Detergent tank, 11 l LAV 0.955.0001K
- Scrubbing brush, 43 cm LAV 0.955.0007
- Tynex brush for linoleum LAV 0.955.0004
- Carpet brush for shampooing LAV 0.955.0014
- Micro fibre pad, set of 5 pads LAV 6.508.0116
- Green pad, set of 5 pads LAV 6.508.0039
- Black pad, set of 5 pads LAV 6.508.0046
- EWU pad holder LAV 0.955.0016
- Wheel D.125 LAV 0.955.0204K
- Profile for pushrod LAV 0.955.0219K



Suitable for:	16-160	16-180	40-160
Stripping synthetic floor (PVC)	✓	✓	–
Stripping cork present floor (Linoleum)	✓	✓	–
Wet scrubbing/basic cleaning of stones, tiles and linoleum (sensitive floors)	✓	✓	–
Wet scrubbing/basic cleaning of synthetic or non-sensitive floors, PVC	✓	✓	–
Crystallising	✓	✓	–
Carpet shampooing	✓	✓	–
Sanding wood	–	–	–
Sanding cement	–	✓	–
Spray polishing and buffing	–	–	✓

Medium Speed Polisher SDM-R 45G 40-160

LAV 0.055.0307

- Professional single disc machine for maintenance cleaning, for polishing whichever type of natural floor or treating with metalized waxes
- Ergonomic handle with integrated safety controls
- Strong joint handle
- Powerful and noiseless motor
- Working width 430 mm (17")
- Brush speed 400 rpm
- 625 x 505 x 1200 mm
- 45 kg

Optional accessories

- Beige pad, set of 5 pads LAV 6.508.0032
- EWU pad holder LAV 0.955.0017
- Wheel D.125 LAV 0.955.0204K
- Profile for pushrod LAV 0.955.0219K

MEDIUM SPEED
FOR
POLISHING



Micro fibre pad

Ideal for natural stone and ceramic tile floors and carpets if used with dried foam shampoo.

Beige pad for polishing (Polyester)

To polish all kinds of floors. Use dry.

Red pad for spray buffing (Polyester)

For frequent use on relatively clean floors, to dry clean, polish and remove shoe heel marks.

Green pad for intermediate cleaning (Nylon)

To remove all old superficial wax and stains for floors ready to be re-coated. Use wet.

Black pad for wet stripping (Nylon)

For wet stripping of heavy layers of wax. Ideal for removing old floor finishing and cement marks.



Floor Scrubber Driers

Walk-behind Scrubber Drier

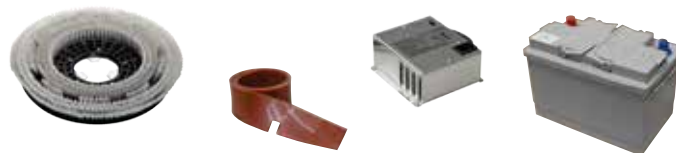
Quick 36B

LAV 8.518.0003

- Suitable for high congested areas like small shops, offices, kitchens, schools, hospitals, bars, gyms, restaurants
- Adjustable flow (automatic start-stop with solenoid valve) of the detergent solution depending on type of surface
- Brush with quick release
- Removable recovery tank
- Battery included with integrated battery charger with data memory and for any type of battery
- Squeegee lifting lever
- Easy access and simple service of the components
- Voltage 12 V
- Working width 360 mm
- Squeegee width 460 mm
- Max working capacity 1260 m²/h
- Detergent tank capacity 11 l
- Recovery tank capacity 12-13 l
- Traction: mechanical
- 130 rpm
- Brush pressure 18 kg
- Brush motor 250 W
- Vacuum motor 180 W
- Detergent solution system: solenoid valve
- 1200 x 430 x 970 mm
- 61 kg



Standard equipment



Optional accessories

- Front squeegee blade, 537 x 2.5 mm LAV 4.508.1040
- Rear squeegee blade, 590 x 3 mm LAV 4.508.1041
- PP brush Ø 360 mm (14") LAV 5.511.1346
- Kit filter LAV 5.511.1511
- Sponge filter LAV 4.508.0739
- Water filter 1/2 D.13 LAV 3.102.0020
- Detergent tank filter LAV 4.508.1064



Easy access to mechanical parts (easy maintenance of each component), recovery tank removable without tools.



User friendly analogic control panel. Control lever for brush operation and detergent water outflow. General on/off switch, brush and vacuum motor switch, solenoid valve operation switch.



Reclining handle: fits any operator's height and allows for the perfect cleaning even in 90° corners.



Beige pad for polishing (Polyester)
To polish all kinds of floors. Use dry.



Green pad for intermediate cleaning (Nylon)
To remove all old superficial wax and stains for floors ready to be re-coated. Use wet.

Walk-behind Scrubber Drier Dynamic 45B

LAV 8.580.0003

- Ideal for small and medium floors up to 1600sqm, especially when congested by people or furnishing like in wellness centres, gyms, car showroom, retail shops, hospitals and schools.
- Automatic brush attachment, discharge and delayed cut-off.
- Adjustable solution release with automatic cut-off.
- Narrow body with both side brush protrusion and 300° squeegee spin.
- Tool less removable recovery tank with large visual inspection window and stretchable discharge hose.
- Adjustable driving handle with dead man switches, soft touch controls and diagnosis (Eco Energy mode and

- battery low level automatic cut-off)
- Large non marking working wheels and sturdy rear roller for displacements.
- Voltage 24 V with batteries and charger
- Working width 450 mm
- Squeegee width 540 mm
- Max working capacity 1600 m²/h
- Detergent tank capacity 30 l
- Recovery tank capacity stop 32 l (total 35 l)
- Traction: mechanical
- Brush motor power 400 W
- 1170 x 580 x 780 cm mm
- 57 kg (97 kg with batteries)

Standard equipment



Optional accessories

- Maintenance-free battery 12 V, 50 Ah LAV 0.107.0061
- Tubular lead-acid battery 12 V, 55 Ah LAV 0.107.0050
- PP brush LAV 5.511.1943
- PES brush LAV 5.511.1944
- Pad holder LAV 5.511.0229
- Beige pad, 5 pieces LAV 6.508.0032
- Green pad, 5 pieces LAV 6.508.0039
- Black pad, 5 pieces LAV 6.508.0046



Accessible on-board charger (DC only, when provided), far away from sprays. Time saving convenient foot operating squeegee lift. Handle can be easily adjusted to fit comfort of operators even in narrow spaces.



On/off switch protecting unintentional use. Protection against overloads, battery discharge abuse (DC only) and undesired run.



Black pad for wet stripping (Nylon)

For wet stripping of heavy layers of wax. Ideal for removing old floor finishing and cement marks.

Floor Scrubber Driers



Walk-behind Scrubber Drier

Free Evo 50B

LAV 8.527.0001

LAV 8.527.0010

- Very compact scrubbing machines suitable for the maintenance cleaning of up to 1500 m²
- Control panel with operator presence safety system
- Low level battery indicator: brush/vacuum and traction progressive cut off
- Solution water filter and solenoid valve
- Easy access to the battery compartment
- Quick drain and easily inspectable recovery tank
- Non-marking wheels
- Roto-molded polyethylene tanks,

- shock and acid resistant
- Lower tank also serves as battery compartment
- Voltage 24 V, battery charger included
- Working width 500 mm
- Squeegee width 800 mm
- Max. working capacity: 2000 m²/h
- Detergent tank capacity 44 l
- Recovery tank capacity 50-60 l
- Traction: mechanical
- 150 rpm
- Pressure on the brushes 18 kg
- Brush motor power 550 W
- 1160 x 510 x 980 mm
- 116 kg

Standard equipment



Optional accessories

- Front squeegee blade LAV 5.508.X468
- Rear squeegee blade LAV 4.508.X467
- Brush LAV 5.511.1097
- Sponge filter LAV 4.508.0739
- Water filter with flow regulator LAV 3.102.0023
- Detergent tank filter LAV 4.508.1064
- Hose airfoam gasket LAV 4.508.0766
- Circular airfoam gasket LAV 4.508.0768



Walk-behind Scrubber Drier

Next Evo 55BT

LAV 8.525.1301

- Designed for the maintenance and deep cleaning of large areas (up to 1.700 m²).
- Especially suitable for cleaning: car shops, sales points, gym, health care
- User friendly control panel
- Hour meter
- Automatic brush lifting (model 66BTA only)
- Fully accessible recovery water tank with visual inspection
- Automatic detergent measuring system
- Big size traction wheels

- Handle with control lever.
- Voltage 24 V
- Working width 550 mm
- Squeegee width 800 mm
- Max. working capacity: 2200 m²/h
- Detergent tank capacity 55 l
- Recovery tank capacity stop 55 l (total 65 l)
- 200 W traction motor
- 165 rpm
- Pressure on the brushes 30 kg
- Brush motor power 550 W
- 1280 x 710 x 1060 mm
- 104 kg

Standard equipment



Optional accessories

- Tubular lead-acid battery, 12 V, 118 Ah LAV 0.107.0002
- 12 gel battery, 12 V, 105 Ah LAV 0.107.0063
- Tynex brush LAV 5.511.1114
- PPL brush LAV 5.511.1113
- Pad holder LAV 5.511.1115
- Beige pad, 5 pieces LAV 6.508.0035
- Green pad, 5 pieces LAV 6.508.0042
- Black pad, 5 pieces LAV 6.508.0049

Ride-on Floor Scrubber Drier Comfort XS-R 75 Up

LAV 8.574.4101

- Capable to work for the maintenance and deep cleaning of large areas (up to 4.000 m²) with a considerable reduction of cleaning costs
- Apply high pressure to the floor, strongly and deeply removing any kind of dirt
- Large load tank capacity, resulting in reduced number of stops and maximum use of battery charge for effective operation of the machine
- Compact size (810 mm)
- Stability even when fully loaded, front independent wheeldrive with tight steering radius
- Recovery tank control window for cleaning and easy ordinary maintenance
- Automatic brush plate lifting system
- Automatic squeegee lifting system
- Automatic squeegee lifting while reverse going
- Automatic device that stops brushes and detergent water outflow when the machine is stationary
- Antifoam device
- Self-levelling brushes
- Voltage 24 V with on-board charger
- Working width 750 mm
- Squeegee width 900 mm
- Max working capacity 3750 m²/h
- Detergent tank capacity 110 l
- Recovery tank capacity stop 130 l (total 155 l)
- Front motorwheel
- 170 rpm
- Brush pressure 50 kg
- Brush motor power 400 W
- Traction motor power 600 W
- 1460 x 810 x 1380 mm
- 220 kg

Standard equipment



Control panel with digital controls and display. Digital display: with hour meter, battery charge level indicator, empty water tank level indicator and forward/reverse traction indicator, speed control adjustment, horn, suction motor



Simple and intuitive controls reduce operator's training time. Easy mechanical brush plate and squeegee lifting system, for low maintenance costs.



Optional accessories

- Tubular lead-acid battery, 6 V, 180 Ah LAV 0.107.0004
- Gel battery, 6 V, 180 Ah LAV 0.107.0072
- Tynex brush LAV 5.511.1246
- PPL brush LAV .511.1169
- Pad holder LAV 5.511.1592
- Beige pad, 5 pieces LAV 6.508.0143
- Green pad, 5 pieces LAV 6.508.0144
- Black pad, 5 pieces LAV 6.508.0141



Hot Water High-Pressure Cleaners



Hot Water High-Pressure Cleaner Mississippi R 1310 XP

LAV 8.625.0101

- Three ceramic coated pistons, brass axial pump head with built-in by-pass valve
- Suction and delivery stainless steel valves
- Vertical burner with high thermal efficiency steel coil
- Temperature regulation gauge
- Diesel pump with by-pass valve
- Detergent built-in tank for indirect suction
- Pressure regulator
- Glycerine pressure gauge
- Operating pressure 130 bar (max. 150 bar)
- Delivery rate 600 l/h
- 3000 W
- Voltage 230 V, 50 Hz, 1 ph
- Motor pump type MPBX2
- 2800 rpm
- 800 x 550 x 830 mm
- 55 kg
- Max. water inlet/outlet temperature: 40/90 °C
- Power Cable 5 m

Standard equipment



Optional accessories

- High-pressure nozzle LAV 3.103.0047
- Motor D.125 H.110 230/50 2P LAV 5.006.0094
- Kit 23 LAV 6.005.0020
- Kit 108 valves LAV 6.005.0117
- Kit 5 oil gaskets LAV 6.005.0006
- Kit 109 water o-rings LAV 6.005.0118



Hot Water High-Pressure Cleaner LKX 1310 LP

LAV 8.621.2947

- 4 poles electrical motor (1450 rpm) with thermal protection and water cooled
- Three ceramic coated pistons, brass linear pump head with built-in by-pass valve
- Low voltage and delayed total stop
- Suction and delivery stainless steel valves
- Vertical burner with high thermal efficiency steel coil
- Temperature regulation gauge with high sensitive stainless steel sensor
- Detergent built-in tank for indirect suction

- Auxiliary motor for burner
- Operating pressure 110 bar (max. 150 bar)
- Delivery rate 660 l/h
- 3000 W
- Voltage 230 V, 50 Hz, 1ph
- Motor pump type MP4
- 1450 rpm
- Max inlet/outlet water temperature: 40/140 °C
- 940 x 650 x 900 mm
- 112 kg

Standard equipment



Optional accessories

- High-pressure nozzle LAV 3.103.0050
- Inlet water filter LAV 4.008.0031
- Kit 23 LAV 6.005.0020
- Kit 108 valves LAV 6.005.0117
- Oil gasket lit LAV 6.605.0111
- LP water gasket kit LAV 6.605.0088

Hot Water High-Pressure Cleaner

Tekna 2015 LP

LAV 8.622.0902

- 4 poles electrical motor (1450 rpm) with thermal protection and water cooling
- Three ceramic pistons, brass linear pump head with built-in by-pass valve
- Auxiliary motor for burner air-cooling and two ways fuel pump
- Vertical burner with high thermal efficiency steel coil
- Low voltage and delayed total stop
- Suction and delivery stainless steel valves
- Temperature regulation gauge with

- high sensitive stainless steel sensor
- Low fuel lamp and cut off
- Header tank and antiscale device
- Operating pressure 200 bar
- Delivery rate 900 l/h
- 7300 W
- Voltage 400 V, 50 Hz, 3 ph
- Motor pump type MPW5
- Max. water inlet/outlet temperature: 40/140 °C
- 1450 rpm
- 1250 x 690 x 870 mm
- 143 kg

Standard equipment



Optional accessories

- High-pressure nozzle LAV 3.103.0051
- Water seals + bushes kit LAV 6.605.0041
- Suction/delivery valve kit LWB LAV 6.605.0042
- LWB water seals kit LAV 6.605.0047
- O-rings kit LAV 6.605.0050
- Hose reel with brake LAV 6.608.0005



Floor Cleaning Detergents



Sanitizing Detergent, Marine Scent Delinox

- For daily cleaning of sanitary environments (toilets, bathrooms, restrooms, wash rooms, dressing rooms, sinks, showers, bidet, faucets, tiles) and high traffic floors (industry, public buildings, hotels, schools, hospitals, offices)
- Useful also on aluminium and stainless steel surfaces
- Marine scent
- pH 2.1 related to pure product
- Non-ionic, biodegradable over 90 %

Dilution

Prepare a solution of water and 3% ÷ 6% of product

Instructions

Apply the solution by using sponge, sprayer, mop, single disk scrubber or scrubber dryer, leave it act for several minutes, then proceed with adequate rinsing

ATA AKD 2166

Ammoniacal Detergent, Pine Scent Liam

- Ammoniacal floor detergent at reduced foaming power
- For degreasing and washing of wide and small floors (home, industry, public buildings, hotels, schools, hospitals, offices)
- Cleans and degreases without rinsing leaving a pleasant scent
- Pine scent
- pH 10.4 related to pure product
- Non-ionic, anionic, biodegradable over 90 %

Dilution

- For deep degreasing or cleaning prepare a solution of water and 4% ÷ 5% of product
- For daily washing prepare a solution of water and 2% ÷ 2,5% of product

Instructions

- Apply the solution by using mop, single disk scrubber or scrubber dryer, does not need to be rinsed
- Floors can be polished when dry by means of a dry mop or single disk scrubber or scrubber dryer equipped with white pads



ATA AKL 2415



Marble Detergent, Floral Scent Marbel

- Alcohol-based scented floor detergent at reduced foaming power
- For the cleansing and maintenance of surfaces like marble, ceramic tiles and linoleum
- Deeply cleans, regaining the original brightness of the surfaces without rinsing and leaving a pleasant scent
- Floral scent
- pH 10.5 related to pure product
- Anionic and non-ionic, biodegradable over 90 %

Dilution

Prepare a solution of water and 1% ÷ 2 % of product

Instructions

Apply the solution by using mop, single disk scrubber or scrubber dryer, does not need to be rinsed

ATA AKM 2461



Lavorwash Group, established in 1975, is a worldwide leader in the cleaning industry and offers a wide range of cleaning machinery suitable for any kind of applications (both indoor and outdoor) based on forty years of experience. Over the years, Lavorwash has grown to become a specialist manufacturer of professional and household cleaning systems, acquiring various leading brands and diversifying its own range to offer innovative products of excellence.

The Lavorwash product range is wide and comprehensive, guaranteeing effective cleaning in every kind of situation, indoor or outdoor, domestic or commercial.

All products undergo constant improvement thanks to the company's commitment to design and research & development, which draws on know-how gained over almost forty years of operation, and considers the aesthetic aspect as well as ergonomics. Lavorwash products are simple and practical to use, effective and attractive in design.

Lavorwash has updated its corporate management system in accordance with ISO 9001: 2008, obtaining recognition by the certification body T V Italy.



Atas started its activity in 1965 with the production of products like hand-washing pasta then neutral car shampoo, cooling and de-waxing agents. Atas always and seriously invests in research to get environmental friendly products.

Atas main strength is never to be satisfied but working hard to create the best products available.

In their lab chemists and graduates are working hard to develop new formulas to pursue this aim.

Their track record shows that they constantly make necessary changes to adhere to the latest regulations. They act with due skill, care and diligence in the selection of raw materials for quality products with the lowest environmental impact possible.

Atas is certified UNI EN ISO 9001:2008 and 14001:2004.





CONTACT & AVAILABILITY OF LAVOR & ATAS PRODUCTS

Need Support?

Do you need help deciding what equipment is best suited for your individual needs? Do you seek advice which accessories are the right ones? Do you have special needs or requests?

Please make use of these strong high quality brands and contact our sales team or one of our authorized dealers to help you tackling your challenges in cleaning floors and other surfaces, machinery and equipment!

Please contact our **AUTHORIZED DEALER:**

